

[Home](#)

[About Us](#)

[Places to Go](#)

[How to use DisabledGo](#)

[News and Blog](#)

[Site Map](#)

You Are Here: [Home](#) > [Places to Go](#) > Venue



## Holiday Inn Leeds - Wakefield M1, Jct 40



Guide Last Updated: 25/10/2017

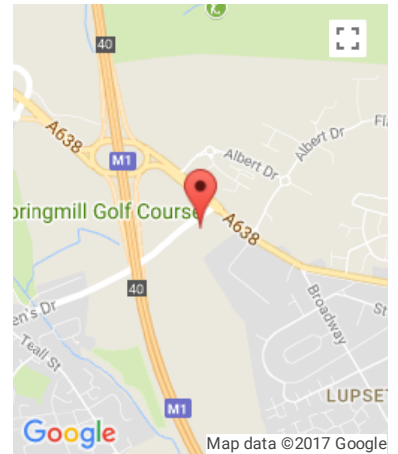


[Explain These Icons](#)

[Add To My Trip](#)

[View the Access Guide](#)

[Something Changed? Click Here](#)



Queen's Drive, Ossett, Wakefield, WF5 9BE

0871 942 9082

<https://www.ihg.com/holidayinn/hotels/gb/en/wakefield/xwdwy/hoteldetail>

### Venue Reviews

Average Rating: ★★★★★

[Review this Venue](#)

## Access Guide

Hotel Introduction

Collapse -

### Hotel Information

Collapse -

- The hotel has its own parking facilities.
- This hotel has its own restaurant located on the ground floor.
- Conference/meeting facilities are available.
- The conference/meeting facilities are located on the on the ground and lower ground floor.

### Room Information

Collapse -

- The hotel has 104 rooms in total.
- There is an/are accessible room(s) within the hotel.
- The accessible room(s) is/are located on the lower ground floor.
- The hotel has 2 accessible room(s) with accessible ensuite facilities.
- There is/are 2 accessible room(s) with a bath.
- There is an/are adjoining room(s) available for the accessible room(s).
- The accessible rooms are 3m - 9m from the rear entrance.
- There is a (one) standard room(s) available on the ground floor.

[Cookie Policy](#)

ing room(s) available for the standard room(s).

- Rooms on other floors are accessed via stairs or lift.

## Auxiliary Aids

Collapse -

- Vibrating pillows with flashing beacons are available on request.
- Bed raisers are not available on request.
- Bath mats are available on request.
- All televisions have subtitles available.

## Comments

Collapse -

- The accessible rooms are on the lower ground floor. The easiest access route is via the rear car park entrance.
- All distances to the accessible rooms are from the rear car park entrance.
- Using the rear car park entrance overcomes the stairs in the hotel lobby and the main staircase leading to the lower ground floor.

## Getting Here

Collapse -

## By Road

Collapse -

- This hotel is located on the outskirts of Wakefield just off Junction 40 of the M1. The hotel is located off the A638.
- This hotel has a car park which is free for all users.

## By Bus

Collapse -

- There is a bus stop within 150 metres of the hotel.
- The nearest bus stop is located on Queen's Drive, outside the hotel grounds entrance.
- [For more information on buses in Yorkshire please click here \(opens new tab\).](#)

## By Train

Collapse -

- The nearest Railway Station is Wakefield Westgate.
- Wakefield Westgate Station is situated in the centre of Westgate, approximately 2.6 miles from the hotel. There are bus and taxi routes to the hotel from the station.
- [For more information on National Rail please click here \(opens new tab\).](#)

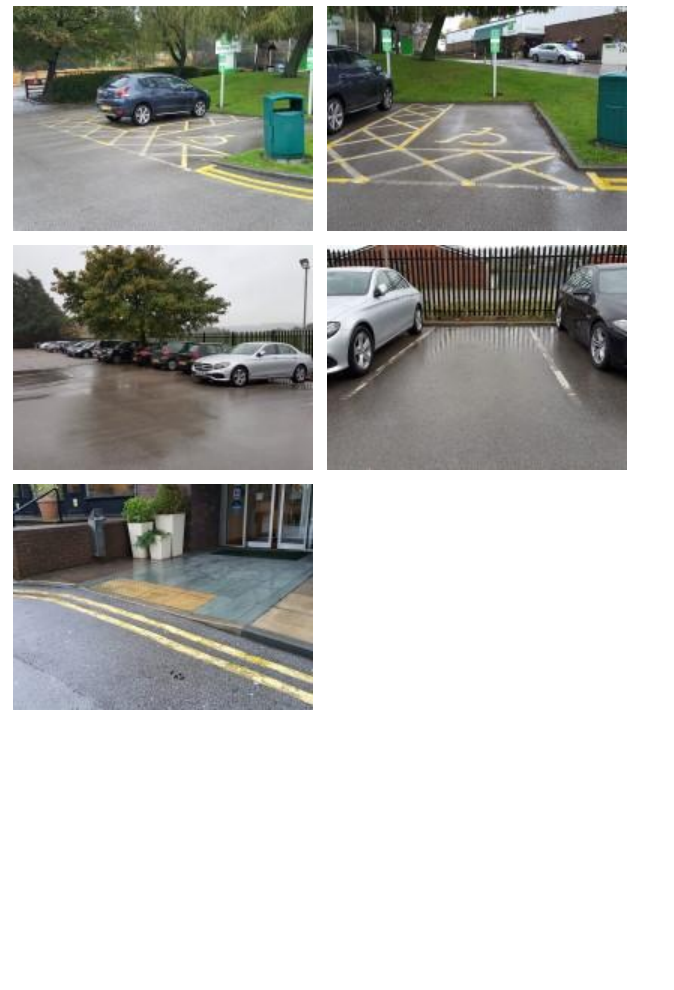
## Getting Help and Assistance

Collapse -

- There is a member of staff available for help and assistance.
- Staff receive disability awareness/equality training.
- Staff do not receive deaf awareness training.
- There is not a member of staff trained in British Sign Language.
- British Sign Language interpreters cannot be provided on request.
- The alternative formats documents can be provided in include; large print on request.
- There is an assistance dog toilet or toileting area at the venue/near by.
- The assistance dog toilet or toileting area is located on the grass areas surrounding the hotel.
- Water bowls for assistance dogs are available.
- There are not mobility aids available.

Parking (Front Car Park)

Collapse -

<p><b>Parking</b> <span style="float: right;">Collapse -</span></p> <ul style="list-style-type: none"> <li>• The hotel does have its own parking facilities.</li> <li>• The car park is located at the front and side of the hotel.</li> <li>• The car park type is open air/surface.</li> <li>• The car park does not have a height restriction barrier.</li> <li>• The car park does not have a barrier control system.</li> <li>• The car park surface is tarmac.</li> <li>• There is a/are Blue Badge parking bay(s) available.</li> <li>• The Blue Badge bay(s) is/are clearly marked and signposted.</li> <li>• There is/are 2 designated Blue Badge parking bay(s) within the car park.</li> <li>• The dimensions of the designated Blue Badge parking bay(s) surveyed are 370cm x 604cm (12ft 2in x 19ft 10in).</li> <li>• There is a 120cm hatched zone around the Blue Badge parking bay(s).</li> <li>• Parking spaces for Blue Badge holders do not need to be booked in advance.</li> <li>• Clearly marked/signposted parent and child parking bays are not available.</li> <li>• All parking spaces are provided on a first come first served basis.</li> <li>• There is an additional car park for visitors.</li> </ul>	
<p><b>Paying</b> <span style="float: right;">Collapse -</span></p> <ul style="list-style-type: none"> <li>• There are not parking charges for the car park.</li> </ul>	
<p><b>Access from the Car Park</b> <span style="float: right;">Collapse -</span></p> <ul style="list-style-type: none"> <li>• The route from the car park to the entrance is accessible to a wheelchair user with assistance.</li> <li>• Assistance may be required because there is/are slopes/ramps.</li> <li>• The entrance is clearly visible from the car park.</li> <li>• The surface on the approach to the entrance is concrete tiles.</li> <li>• There is not a road to cross between the car park and the entrance.</li> <li>• There is tactile paving on dropped kerbs between the car park and the entrance.</li> <li>• The nearest designated Blue Badge parking bay is approximately 35m (38yd 10in) from the main hotel entrance.</li> </ul>	
<p><b>Drop-off Point(s)</b> <span style="float: right;">Collapse -</span></p> <ul style="list-style-type: none"> <li>• There is not a/are not clearly marked drop-off point(s).</li> </ul>	

[Cookie Policy](#)

Collapse -

- This is the best car park for access to the reception and restaurant/bar.

## Parking (Rear Car Park)

Collapse -

## Parking

Collapse -

- The hotel does have its own parking facilities.
- The car park is located at the rear of the hotel.
- The car park type is open air/surface.
- The car park does not have a height restriction barrier.
- The car park does not have a barrier control system.
- The car park surface is tarmac.
- There is a/are Blue Badge parking bay(s) available.
- The Blue Badge bay(s) is/are clearly marked and signposted.
- There is/are 2 designated Blue Badge parking bay(s) within the car park.
- The dimensions of the designated Blue Badge parking bay(s) surveyed are 434cm x 578cm (14ft 3in x 18ft 12in).
- There is a 120cm hatched zone around the Blue Badge parking bay(s).
- Parking spaces for Blue Badge holders do not need to be booked in advance.
- Clearly marked/signposted parent and child parking bays are not available.
- All parking spaces are provided on a first come first served basis.
- There is an additional car park for visitors.



## Paying

Collapse -

- There are not parking charges for the car park.

## Access from the Car Park

Collapse -

- The route from the car park to the entrance is accessible to a wheelchair user with assistance.
- Assistance may be required because there is/are slopes/ramps.
- The entrance is clearly visible from the car park.
- The surface on the approach to the entrance is concrete.
- There is not a road to cross between the car park and the entrance.
- The nearest designated Blue Badge parking bay is approximately 9m (9yd 2ft) from the rear hotel entrance.

## Drop-off Point(s)

Collapse -

- There is not a/are not clearly marked drop-off point(s).

[Cookie Policy](#)

Comments

Collapse -

- The rear car park is the most accessible car park to the accessible rooms as it avoids the stairs/platform lift in the reception lobby area and the main stairs/platform lift.

Outside Access (Front Entrance)

Collapse -

Entrance

Collapse -

- This information is for the entrance located at the front of the hotel.
- The entrance area/door is clearly signed.
- There is step free access at this entrance.
- There is a canopy or recess which provides weather protection at this entrance.
- The entrance door(s) does not/do not contrast visually with its immediate surroundings.
- The bell/buzzer is not in a suitable position to allow wheelchair users to gain access.
- The height of the bell/buzzer is 134cm (4ft 5in).
- The main door(s) open(s) automatically.
- The door(s) is/are double width.
- The width of the door opening is 111cm.
- There is a second set of doors.
- The door(s) open(s) automatically.
- The door(s) is/are double width.
- The width of the door opening is 111cm.



Comments

Collapse -

- The doormat creates a slight threshold between the first and second set of doors (shown in photographs 5 and 6).

Outside Access (Rear Entrance)

Collapse -

Entrance


Collapse -

- This information is for the entrance located at the rear of the hotel.
- The entrance area/door is clearly signed.
- There is ramped/sloped access at this entrance.
- There is a canopy or recess which provides weather protection at this entrance.
- The entrance door(s) does not/do not contrast visually with its immediate surroundings.
- The bell/buzzer is not in a suitable position to allow wheelchair users to gain access.
- The height of the bell/buzzer is 113cm (3ft 8in).
- The main door(s) open(s) towards you (pull).




Cookie Policy

ble width.

<ul style="list-style-type: none"> <li>• The door(s) is/are heavy.</li> <li>• The width of the door opening is 138cm.</li> <li>• There is a second set of doors.</li> <li>• The door(s) open(s) towards you (pull).</li> <li>• The door(s) is/are double width.</li> <li>• The door(s) is/are heavy.</li> <li>• The width of the door opening is 141cm.</li> <li>• There is a member of staff available for assistance at this entrance.</li> </ul>	
<p>Ramp/Slope</p> <p style="text-align: right;">Collapse -</p> <ul style="list-style-type: none"> <li>• The ramp/slope is located on the path leading to the entrance.</li> <li>• The gradient of the ramp/slope is slight.</li> </ul>	
<p>Comments</p> <p style="text-align: right;">Collapse -</p> <ul style="list-style-type: none"> <li>• This entrance gives the best access to accessible rooms 14 and 18.</li> <li>• This entrance is locked between 19:00 and 07:00.</li> <li>• To gain access out of hours please use the bell and a member of staff will open them.</li> </ul>	

Reception

Collapse -

<p>Reception</p> <p style="text-align: right;">Collapse -</p> <ul style="list-style-type: none"> <li>• The reception point is located ahead as you enter the front entrance.</li> <li>• The reception point is approximately 7m (7yd 1ft) from the front entrance.</li> <li>• The reception area/desk is clearly visible from the entrance.</li> <li>• There is step free access to the reception point.</li> <li>• There is a clear unobstructed route to the reception point.</li> <li>• There are no windows, TVs, glazed screens or mirrors behind the reception point which could adversely affect the ability of someone to lip read.</li> <li>• The reception counter is not placed in front of a background which is patterned.</li> <li>• The lighting levels at the reception point are good.</li> <li>• The height of the reception counter is high (110cm+).</li> <li>• There is sufficient space to write or sign documents on the counter.</li> <li>• There is not a lowered section of the counter.</li> <li>• The counter is staffed.</li> <li>• Clipboards can be provided to anyone who is unable to use the desk.</li> <li>• There is a hearing assistance system at the reception point.</li> </ul> <p>Cookie Policy      a fixed loop.</p>	
---	--

- The hearing assistance system is signed.
- Staff are trained to use the system.
- Signs and universally accepted symbols or pictograms, indicating lifts, stairs, WCs, circulation routes and other parts of the building are provided in the reception area.
- The type of flooring in the reception area is carpet.

Reception Waiting Area Collapse -

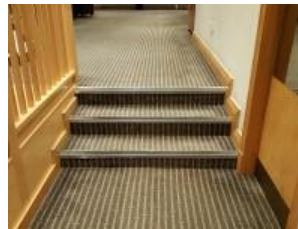
- There is a waiting area close to the reception point.
- Access to the waiting area is unobstructed.
- There are seats with armrests on both sides.
- There is sufficient space for a wheelchair user to use the waiting area.

Getting Around

Collapse -

Access Collapse -

- There is step free access throughout the building via lift(s).
- There is/are 3 clearly marked step(s), with a central handrail, for access to the restaurant/bar.
- The height of the step(s) is/are between the recommended 15cm and 18cm.
- The going of the step(s) is/are not between the recommended 30cm and 45cm.
- There is a platform lift which overcomes the steps.
- These steps are located in the reception lobby area, to the left as you enter the front entrance. These steps are shown in photographs 1 and 2.
- There is/are 3 clearly marked step(s), with no handrails, for access to the rear ground floor of the hotel.
- The height of the step(s) is/are between the recommended 15cm and 18cm.
- The going of the step(s) is/are between the recommended 30cm and 45cm.
- There is a platform lift which overcomes the steps.
- These steps are located just past the reception desk in the hotel lobby area. These steps are ahead of you as you enter the front hotel entrance. These steps are shown in photographs 3 and 4.



Circulation Collapse -

- There are doors in corridors/walkways which have to be opened manually.
- The type of flooring in corridors/walkways is carpet and wood.
- There is some flooring in corridors/walkways which is shiny and could cause issues with glare or look slippery to some people.

There is a high contrast between the walls and floor doors/walkways.

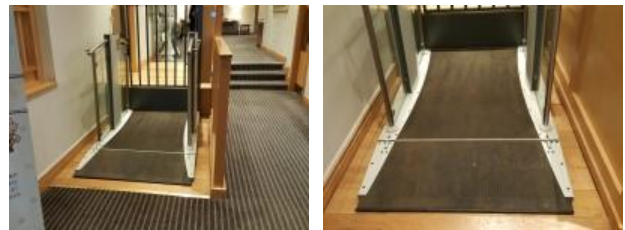
[Cookie Policy](#)

<ul style="list-style-type: none"> <li>• There are seats with armrests on both sides at regular intervals.</li> <li>• The lighting levels are varied.</li> <li>• Access to other floors/levels is via stairs and lift.</li> </ul>	<p>Signage <span style="float: right;">Collapse -</span></p> <ul style="list-style-type: none"> <li>• Wayfinding signage is provided.</li> <li>• The colour, design and typeface of signs is consistent throughout the building.</li> </ul>
<p>Audio <span style="float: right;">Collapse -</span></p> <ul style="list-style-type: none"> <li>• This venue does play background music in public areas.</li> <li>• Music is played in the reception and restaurant/bar.</li> <li>• There is a hearing assistance system in the public areas of the building.</li> <li>• The system is a fixed loop.</li> <li>• The hearing systems are located at the reception desk and in the restaurant/bar.</li> </ul>	

## Lift (Rear Hotel Lobby Platform Lift)

Collapse -

- There is a lift for public use.
- The lift is located to the left of the reception desk in the hotel lobby.
- The lift is clearly visible from the entrance.
- The lift is approximately 8m (8yd 2ft) from the front entrance.
- The lift is a platform lift.
- A member of staff does not need to be notified for use of the lift.
- The platform lift accesses a small level change.
- Clear signs indicating the facilities on each floor are not provided on lift lobby landings.
- There is a clear level manoeuvring space of 150cm x 150cm in front of the lift.
- The external controls for the lift are within 90cm - 110cm from the floor.
- The colour contrast between the external lift controls and the control plate is good.
- The colour contrast between the external lift control plate and the wall is poor.
- The clear door width is 87cm (2ft 10in).
- The dimensions of the lift are 83cm x 140cm (2ft 9in x 4ft 7in).
- There are separate entry and exit doors in the lift.
- The lift does not have a visual floor indicator.
- The lift does not have an audible announcer.
- The controls for the lift are within 90cm - 120cm from the floor.
- There is not a hearing loop system.
- The lift does not have Braille markings.
- The lift does not have tactile markings.





## Eating and Drinking

Collapse -

- The following information is for the restaurant/bar.
- The restaurant/bar is located to the left as you enter the front entrance.
- There is step free access, via lift, to the restaurant/bar.
- Full table service is available.
- There is a hearing assistance system.
- The system is a fixed loop.
- The hearing assistance system is signed.
- Staff are trained to use the system.
- There is step free access within the restaurant/bar.
- There is ample room for a wheelchair user to manoeuvre.
- This area does play background music.
- The type of flooring in this area is carpet and wood.
- Some tables are permanently fixed.
- Some chairs are permanently fixed.
- Some chairs have armrests on both sides.
- The nearest table is approximately 2m from the entrance/opening.
- The nearest table is approximately 2m from the till/counter.
- The standard height for tables is 71cm.
- Plastic/takeaway cups are available.
- Plastic/takeaway cutlery is not available.
- Drinking straws are available.
- There are hand held menus available.
- Menus are not available in Braille.
- Menus are not available in large print.
- Picture menus are available.
- Menus are clearly written.
- Menus are presented in contrasting colours.
- The type of food served here is hot and cold meals and snacks.
- The lighting levels are good.



## Comments

Collapse -

- There is a deep step to access the fixed seating area in the restaurant (shown in photograph 5).
- There are 2 areas of the restaurant/bar with stepped access.
- There is stepped access to a raised seating area at the front left of the restaurant/bar (shown in photograph 6).
- There are 2 medium height steps to access this area.
- The steps do not have handrails.
- There is a similar raised seating area at the rear of the restaurant (shown in photograph 7).
- There are 2 medium height steps to access this area.
- The steps do not have handrails.

Conference / Meeting Facilities (Walton Suite 1)

Collapse -

- Conference/meeting facilities are available.
- The conference/meeting facilities are located on the upper ground floor, to the rear of the reception foyer.
- There is step free access to the conference/meeting facilities, via lift.
- The door opening width(s) is/are 75cm+ for the room(s).
- There is not a hearing assistance system for the room(s).
- There are no chairs with armrests on both sides within the room(s).
- There is sufficient space for a wheelchair user to manoeuvre within the room(s).
- The lighting levels in the room(s) are good.



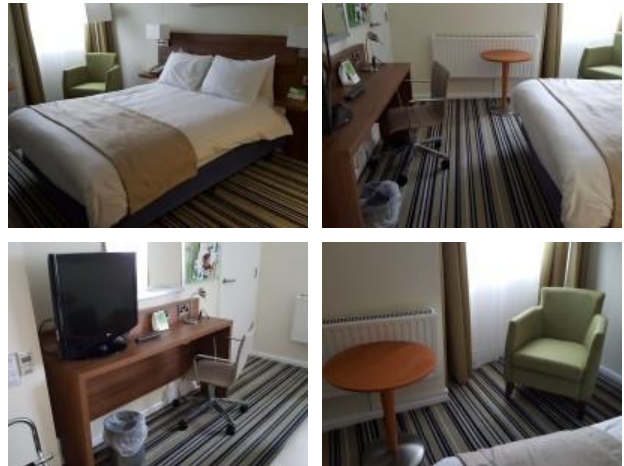
Accessible Room(s) (Rooms 16 and 18)

Collapse -

Accessible Room Information

Collapse -

- The details in this section relates to the accessible room(s) with a lowered bath.
- This type of accessible room is located on the ground floor.
- There is step free access to this type of accessible room.
- Accessible rooms of this type have specifications that may vary.
- Guests need to open a door between the entrance and the room(s).
- The narrowest width of the corridor leading to the room surveyed was 131cm.



Bedroom Features

Collapse -

- The accessible room surveyed is located on the ground floor, to the rear of the hotel.
- The accessible room surveyed at the time of the visit was Room 18.
- There is step free access to the accessible room surveyed.
- There is numbered signage on or near the accessible room door.
- The door is key card activated.
- The fob/ card reader height is 114cm.
- The width of the door is 84cm (2ft 9in).
- There are lowered spy holes available.
- The bed type is double.
- The bed height is not adjustable.
- The height of the bed is 62cm (2ft).
- The measurement between the bed base and floor is 13cm (5in).
- The bed is moveable.



[Cookie Policy](#)

in unobstructed minimum turning m next to the bed.

- The height of the desk is 76cm.
- The desk is not height adjustable.
- The desk knee recess does not have the recommended dimensions of 70cm (height) x 50cm (depth).
- The height and depth of the knee recess is 72cm x 36cm.
- The room surveyed had a height adjustable chair with armrests and an armchair.
- Wardrobes have not been adapted to allow use from a seated position.
- Light switches are between 75cm and 120cm (4ft) from floor level.
- Electric sockets are between 40cm and 100cm (4ft) from floor level.
- The window control type(s) for the room is a/are standard lever(s).
- There is an emergency alarm in the room.
- The emergency pull cord alarm is within reach and fully functional.
- The emergency alarm rings to reception.
- There is a flashing fire alarm beacon within the room.
- The type of flooring is carpet.

#### Ensuite Facilities

Collapse -

- The ensuite door opens outwards.
- The door weight is light.
- The door is locked by a twist lock.
- The width of the door to the ensuite is 84cm (2ft 9in).
- The dimensions of the ensuite are 252cm x 175cm (8ft 3in x 5ft 9in).
- The ensuite does not have an unobstructed minimum turning space of 150cm x 150cm in front of the toilet seat.
- The ensuite has not got a non slip floor.
- There is an emergency alarm within the ensuite.
- The emergency pull cord alarm is within reach and fully functional.
- The emergency alarm rings to reception.
- There is not a flashing fire alarm beacon within the ensuite.
- Disposal facilities are available.
- There is a/are pedal waste paper bin disposal units.
- There is a mirror.
- The mirror is not placed at a lower level or at an angle for ease of use.
- There is a shelf immediately next to or behind the toilet.
- The shelf is between 90cm and 100cm.
- There is a wash basin.
- The wash basin cannot be reached from seated on the toilet.
- The wash basin is not placed higher than 74cm (2ft 5in).
- There are vertical wall-mounted grab rails on both sides

[Cookie Policy](#)

- The tap type is lever.
- There is a mixer tap.
- There is not a soap dispenser.

## Toilet Details

Collapse -

- The height of the toilet seat above floor level is 51cm (1ft 8in).
- The toilet has a wall which acts as a backrest.
- There is a lateral transfer space.
- As you face the toilet pan the transfer space is on the right.
- The lateral transfer space is 200cm (6ft 7in).
- There is a flush, however it is not on the transfer side.
- There is not a spatula type lever flush.
- There is a dropdown rail on the transfer side.
- There is a/a are wall-mounted grab rail(s) available.
- As you face the toilet, the wall mounted grab rails are on both sides.
- There is a vertical wall-mounted grab rail on the transfer side.
- There is a horizontal wall-mounted grab rail on the opposite side of the seat to the transfer space.
- There is a toilet roll holder.
- The toilet roll holder can be reached from seated on the toilet.
- The toilet roll holder is not placed higher than 100cm (3ft 3in).

## Bath Details

Collapse -

- The ensuite has a lowered bath.
- The height of the side of the bath from floor level is 48cm (1ft 7in).
- The tap type is lever.
- There is a mixer tap.
- There is a shower over the bath.
- The shower head is height adjustable.
- The shower control type is lever.
- There is a/a are wall-mounted grab rail(s) available for the bath.

## Colour Contrast and Lighting

Collapse -

- The colour contrast between the external hotel room door and wall is good.
- The colour contrast between the internal hotel room door and wall is fair.
- The colour contrast between the hotel room walls and floor is good.
- The colour contrast between the external ensuite door and wall is poor.

[Cookie Policy](#)

- The colour contrast between the internal ensuite door and wall is poor.
- The colour contrast between the ensuite walls and floor is good.
- The colour contrast between the drop down rail(s) and wall is good.
- The colour contrast between the wall-mounted grab rail(s) and wall is good.
- The toilet seat colour contrast is poor.
- The lighting levels in the room are low.
- The lighting levels in the ensuite are low.

Other Floors

Collapse -

Stairs

Collapse -

- Stairs can be used to access other floors.
- The stairs are for public use.
- The stairs are located in the centre of the hotel to the rear of the reception foyer.
- The stairs are approximately 10m from the rear entrance.
- Signs indicating the location of the stairs are not available from the entrance.
- There are manual, heavy, double doors to enter and exit the stairwell on all floors.
- The floors which are accessible by stairs are G, UG, 1 and 2.
- There are 15+ steps between floors.
- The height of the step(s) is/are between the recommended 15cm and 18cm.
- The going of the step(s) is/are between the recommended 30cm and 45cm.
- The steps are clearly marked.
- There is a/are handrail(s) at the step(s).
- The steps have a handrail on both sides.
- Handrails are at the recommended height (90cm-100cm).
- Handrails do cover the flight of stairs throughout its length.
- Handrails are easy to grip.
- Handrails do not extend horizontally beyond the first and last steps.
- There is a landing.
- Clear signs indicating the facilities on each floor are provided on landings.
- The lighting levels at the steps are good.



Comments

Collapse -

- These stairs are 20m from the front entrance.
- The handrail on the left going up is oblong and not as easy to grip as the oval handrail to the right.

[Cookie Policy](#)

- The oblong handrail to the left has gaps and does not cover the stairs in their entirety.

## Lift (Other Floors Platform Lift)

Collapse -

- There is a lift for public use.
- The lift is located on the stairway in the corridor to the rear of reception.
- Signs indicating the location of the lift are not available from the entrance.
- The lift is approximately 11m (12yd 1in) from the rear entrance.
- The lift is a platform lift.
- A member of staff needs to be notified for use of the lift.
- The floors which are accessible by this lift are G and UG.
- Clear signs indicating the facilities on each floor are provided on lift lobby landings.
- There is a clear level manoeuvring space of 150cm x 150cm in front of the lift.
- The external controls for the lift are within 90cm - 110cm from the floor.
- The colour contrast between the external lift controls and the control plate is poor.
- The colour contrast between the external lift control plate and the wall is poor.
- The clear door width is 80cm (2ft 7in).
- The dimensions of the lift are 80cm x 100cm (2ft 7in x 3ft 3in).
- There are separate entry and exit doors in the lift.
- There is not a list of floor services available within the lift.
- The lift does not have a visual floor indicator.
- The lift does not have an audible announcer.
- The controls for the lift are within 90cm - 120cm from the floor.
- There is not a hearing loop system.
- The lift does not have Braille markings.
- The lift does not have tactile markings.
- The lighting levels in the lift are good.
- There is a/are similar lift(s) available.



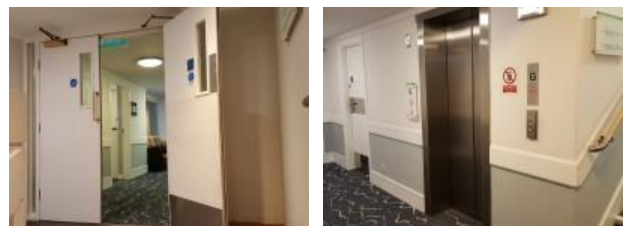
Comments

Expand +

## Lift (Main Hotel Lift)

Collapse -

- There is a lift for public use.
- The lift is located in the corridor to the left of the rear entrance.
- Signs indicating the location of the lift are not available from the entrance.
- The lift is approximately 7m (7yd 1ft) from the rear entrance.
- The lift is a standard lift.
- A member of staff does not need to be notified for use of the lift.
- The floors which are accessible by this lift are G, 1 and 2.
- There are manual, heavy, double doors to access the lift lobby


[Cookie Policy](#)

- Clear signs indicating the facilities on each floor are provided on lift lobby landings.
- There is a clear level manoeuvring space of 150cm x 150cm in front of the lift.
- Lift doors do contrast visually with lift lobby walls.
- The external controls for the lift are within 90cm - 110cm from the floor.
- The colour contrast between the external lift controls and the control plate is poor.
- The colour contrast between the external lift control plate and the wall is good.
- The clear door width is 78cm (2ft 7in).
- The dimensions of the lift are 99cm x 140cm (3ft 3in x 4ft 7in).
- There are no separate entry and exit doors in the lift.
- There is a mirror to aid reversing out of the lift.
- There is not a list of floor services available within the lift.
- The lift does have a visual floor indicator.
- The lift does have an audible announcer.
- The controls for the lift are within 90cm - 120cm from the floor.
- There is not a hearing loop system.
- The lift does have Braille markings.
- The lift does have tactile markings.
- The lighting levels in the lift are good.



Standard Room(s) (Room 220)

Collapse -

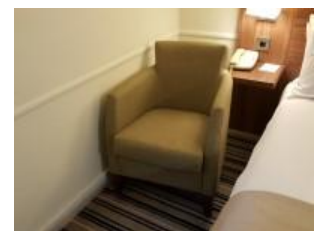
Bedroom Features

Collapse -

- The room surveyed is located on the second floor.
- The room surveyed at the time of the visit was Room 220.
- There is step free access to the room surveyed, via lift.
- There is numbered signage on or near the room door.
- The width of the door is 76cm (2ft 6in).
- The bed type is double.
- The height of the bed is 59cm (1ft 11in).
- The measurement between the bed base and floor is 13cm (5in).
- Light switches are not within 120cm (3ft 11in) from floor level.
- There is not an emergency alarm in the room.
- There is not a flashing fire alarm beacon within the room.
- The type of facilities within the ensuite include; a toilet, a wash basin and a shower.
- The ensuite door opens inwards.
- The width of the door to the ensuite is 63cm (2ft 1in).
- There is not an emergency alarm within the ensuite.
- There is not a flashing fire alarm beacon within the ensuite.
- The tap type is lever.
- There is a mixer tap.

[Cookie Policy](#)

oils are available for the bath.



## Colour Contrast and Lighting

Collapse -

- The colour contrast between the external hotel room door and wall is good.
- The colour contrast between the internal hotel room door and wall is poor.
- The colour contrast between the hotel room walls and floor is good.
- The colour contrast between the external ensuite door and wall is poor.
- The colour contrast between the internal ensuite door and wall is poor.
- The colour contrast between the walls and floor in the ensuite is good.
- The lighting levels in the room are low.
- The lighting levels in the ensuite are good.

## Accessible Toilet(s)

Collapse -

- There is an/are accessible toilet(s) for public use.

## Location and Access

Collapse -

- The accessible toilet surveyed is not for the sole use of disabled people.
- This accessible toilet is located in the reception foyer, facing the reception desk.
- This accessible toilet is approximately 10m (10yd 2ft) from the front entrance.
- There is step free access to the accessible toilet.



## Features and Dimensions

Collapse -

- This is a shared toilet.
- A key is not required for the accessible toilet.
- There is tactile and pictorial signage on or near the toilet door.
- The door opens outwards.
- The door is heavy.
- The door is locked by a lever twist.
- The width of the accessible toilet door is 88cm (2ft 11in).
- The dimensions of the accessible toilet are 152cm x 216cm (4ft 12in x 7ft 1in).
- The accessible toilet does have an unobstructed minimum turning space of 150cm x 150cm.
- The toilet has not got a non slip floor.
- There is a lateral transfer space.
- As you face the toilet pan the transfer space is on the left.
- The lateral transfer space is 88cm (2ft 11in).
- There is a flush, however it is not on the transfer side.
- There is a spatula type lever flush.

[Cookie Policy](#)
[mail on the transfer side.](#)



- There is an emergency alarm.
- The emergency pull cord alarm is fully functional.
- There is a flashing fire alarm beacon within the toilet.
- Disposal facilities are available in the toilet.
- There is a/are female sanitary, non-infectious waste and open waste paper bin disposal units.
- There is a/are coat hook(s).
- There are coat hooks in the toilet at 113cm and 145cm from the floor.

## Position of Fixtures

## Collapse -

- There is a/are wall-mounted grab rail(s) available.
- As you face the toilet the wall-mounted grab rail(s) is/are on both sides.
- There is a vertical wall-mounted grab rail on the transfer side.
- There is a horizontal wall-mounted grab rail on the opposite side of the seat to the transfer space.
- There is a mirror.
- The mirror is not placed at a lower level or at an angle for ease of use.
- There is not a shelf next to the toilet.
- The toilet has a cistern.
- The height of the toilet seat above floor level is 48cm (1ft 7in).
- There is a toilet roll holder.
- The toilet roll holder can be reached from seated on the toilet.
- The toilet roll holder is not placed higher than 100cm (3ft 3in).
- The height of the toilet roll holder is 93cm (3ft 1in).
- There is a wash basin.
- The wash basin can be reached from seated on the toilet.
- The wash basin is placed higher than 74cm (2ft 5in).
- The height of the wash basin is 75cm (2ft 6in).
- There is a vertical wall-mounted grab rail on the left hand side of the wash basin.
- The wash basin tap type is lever.
- There is a mixer tap.
- There is a soap dispenser.
- The soap dispenser can be reached from seated on the toilet.
- The height of the soap dispenser is 92cm.
- There is a towel dispenser.
- The towel dispenser cannot be reached from seated on the toilet.
- The towel dispenser is not placed higher than 100cm (3ft 3in).
- There is a hand dryer.
- The hand dryer cannot be reached from seated on the

[Cookie Policy](#)

- The hand dryer is not placed higher than 100cm (3ft 3in).

## Colour Contrast and Lighting

Collapse -

- The contrast between the external door and wall is good.
- The contrast between the internal door and wall is good.
- The contrast between the dropdown rail(s) and wall is good.
- The contrast between the wall-mounted grab rail(s) and wall is good.
- The toilet seat colour contrast is poor.
- The contrast between the walls and floor is poor.
- The lighting levels are good.

## Standard Toilet(s)

Collapse -

- Standard toilet facilities are available.

## Access to Standard Female Toilet(s)

Collapse -

- The female toilet facilities that were surveyed are located in the reception lobby, facing the reception desk.
- The female toilet(s) is/are approximately 8m (8yd 2ft) from the front entrance.
- There is step free access to the female toilet(s).
- There is tactile and pictorial signage on or near the toilet door.
- An ambulant toilet with wall-mounted grab rails is available.
- There is a horizontal grab rail to the right of the seat and vertical one to the left.
- The wash basin tap type is sensor.
- There is a flashing fire alarm beacon within the toilets.
- Lighting levels are good.



## Access to Standard Male Toilet(s)

Collapse -

- The male toilet facilities that were surveyed are located in the reception lobby, facing the reception desk.
- The male toilet(s) is/are approximately 12m (13yd 4in) from the front entrance.
- There is step free access to the male toilet(s).
- There is tactile and pictorial signage on or near the toilet door.
- An ambulant toilet with wall-mounted grab rails is available.
- There is a horizontal grab rail to the right of the seat and vertical one to the left.
- The wash basin tap type is sensor.
- There is not a flashing fire alarm beacon within the toilets.
- Lighting levels are good.

Baby Change Facilities

Collapse -

- Baby change facilities are located within the venue.
- Baby change facilities are located in the standard female and male toilets.
- There is step free access to the baby change facilities.
- The baby change table is not set against the wall, permanently fixed at 75cm from the floor.
- The baby change table is not height adjustable.
- The height of the baby change table once extended is 110cm (3ft 7in).

Who we are...

- Homepage
- About Us
- Access Icons
- FAQs
- Contact Us
- Press and Media

The way we work...

- Website Conditions
- Acceptable Use Policy
- Cookie Policy
- Privacy Policy
- Accessibility Policy
- Common Access Guide Terms Explained

Our support for business

- Disabled Charities and Useful Links
- FAQs Around Our Surveyors

Follow @DisabledGo

Join us...

- Facebook
- Twitter
- Google+
- Switch to mobile site



eCommerce Solutions by PureNet